

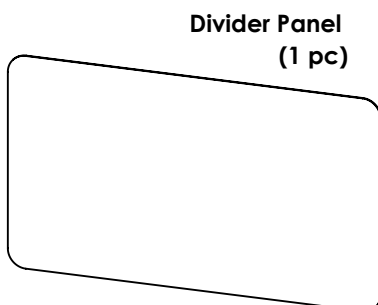
Bar Top Counter Divider with Screw Mount Clamps

page 1 of 2

ASSEMBLY INSTRUCTIONS

READ ALL INSTRUCTIONS BEFORE YOU BEGIN. DO NOT JUMP AHEAD OF ANY STEP.

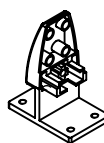
PARTS LIST:



Divider Panel
(1 pc)



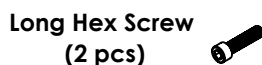
Rubber
Mat
(4 pcs)



Clamp Back
(2 pcs)



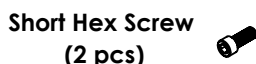
Clamp Front
(2 pcs)



Long Hex Screw
(2 pcs)



Hex Key
(1 pc)



Short Hex Screw
(2 pcs)



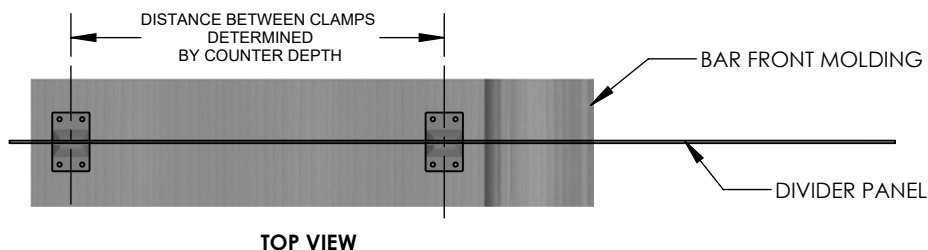
Wood Screw
(8 pcs)

*TWO PERSON ASSEMBLY RECOMMENDED

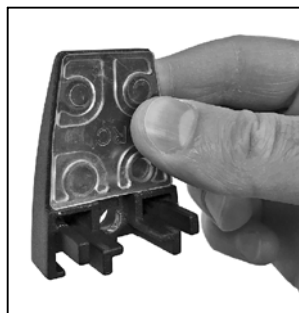
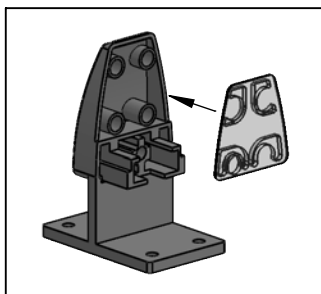
*TOOLS REQUIRED: PHILLIPS HEAD SCREWDRIVER, POWER DRILL WITH 1/8" DRILL BIT (NOT INCLUDED); HEX KEY (INCLUDED)

SEE BELOW DIAGRAM AS REFERENCE DURING INSTALLATION OF YOUR DIVIDER.
SPACING BETWEEN CLAMPS WILL DEPEND ON THE DEPTH OF YOUR COUNTER/TABLETOP.

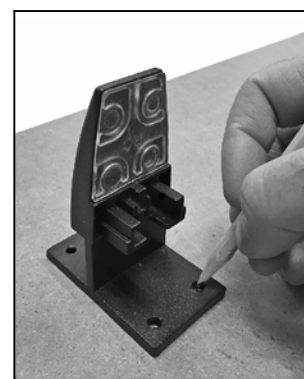
NOTE: It is recommended that the clamps are installed a minimum of 16" apart from center to center, up to a maximum of 24" apart.



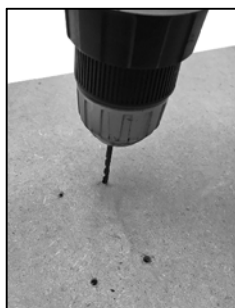
STEP 1: Insert Rubber Mats into Clamp Fronts and Clamp Backs.



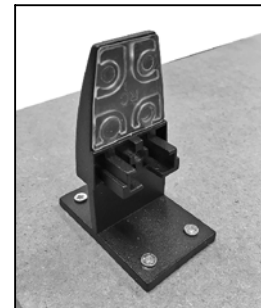
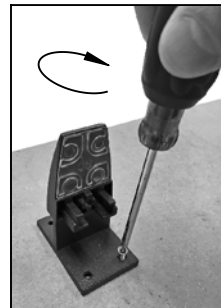
STEP 2: Using one of the Clamp Backs as a template, place Clamp Back on desired mounting surface and mark mounting hole locations with pen or pencil.



STEP 3: Drill four pilot holes into mounting surface for the hole locations you marked in STEP 2.



STEP 4: Align holes in bottom of Clamp Back with pre-drilled holes in mounting surface and use four of the supplied wood screws to attach Clamp Back to mounting surface.



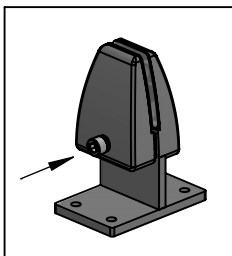
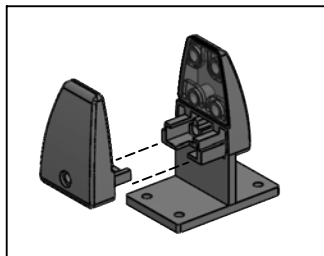
Bar Top Counter Divider with Screw Mount Clamps

page 2 of 2

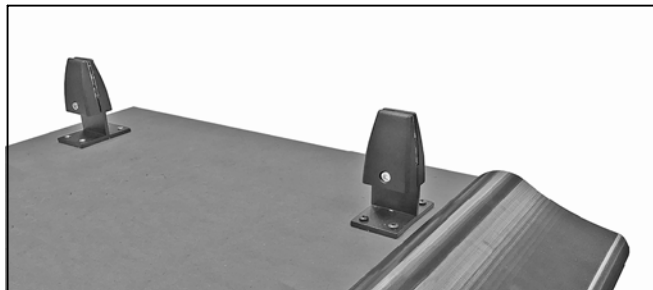
ASSEMBLY INSTRUCTIONS

READ ALL INSTRUCTIONS BEFORE YOU BEGIN. DO NOT JUMP AHEAD OF ANY STEP.

STEP 5: Slide Clamp Front into track in installed Clamp Back. Then, insert one of the Short Hex Screws into hole in Clamp Front.

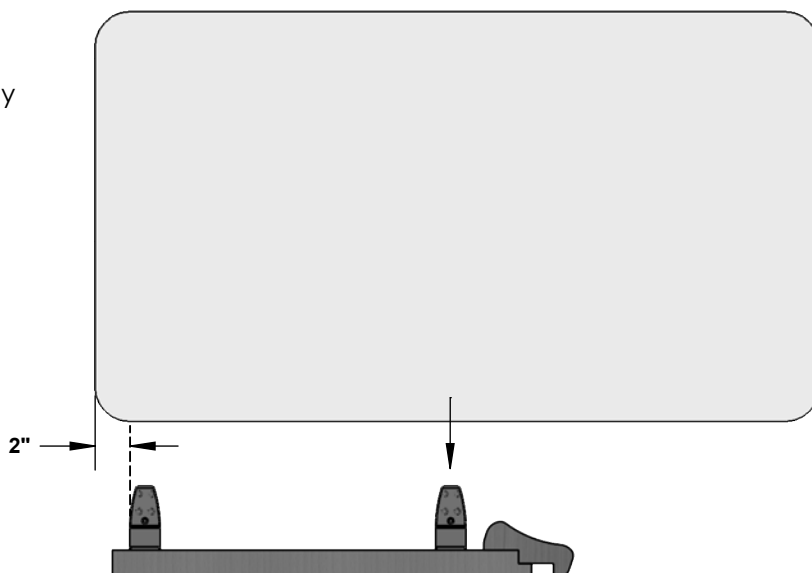


STEP 6: Repeat STEPS 2 - 5 to install remaining Clamp on opposite side of Bar Counter/table.

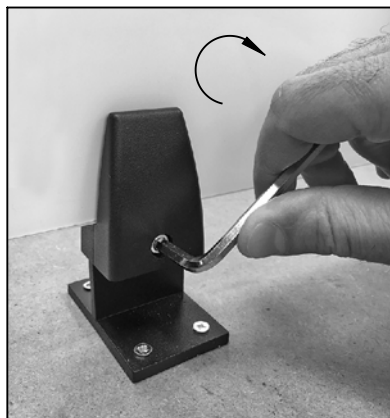


STEP 7: Peel off the protective plastic film from both sides of Divider Panel and then carefully guide Divider Panel down into opening in top of Clamps.

***NOTE:** Divider Panel on back side should extend a minimum distance of 2" past edge of clamp.



STEP 8: While one person supports the Divider Panel, have the other person use supplied Hex Key to tighten Hex screws in Clamps until Panel is snug.



ASSEMBLY COMPLETED



14801