

Velcro Type Mount Sneeze Guard w/ Pass Through w/ Dual Lock

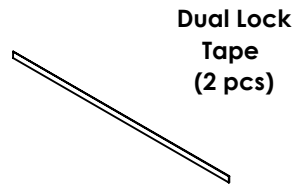
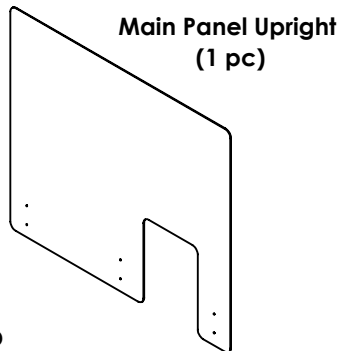
ASSEMBLY INSTRUCTIONS

READ ALL INSTRUCTIONS BEFORE YOU BEGIN. DO NOT JUMP AHEAD OF ANY STEP.

PARTS LIST:

NOTE: Clean the area where the Dual Lock tape will be applied with a 50:50 mixture of isopropyl alcohol (IPA) and water for proper adhesion.

***TOOLS REQUIRED: SCISSORS**
***TWO PERSON ASSEMBLY RECOMMENDED**



USED TO CONNECT MORE THAN ONE SHEILD.



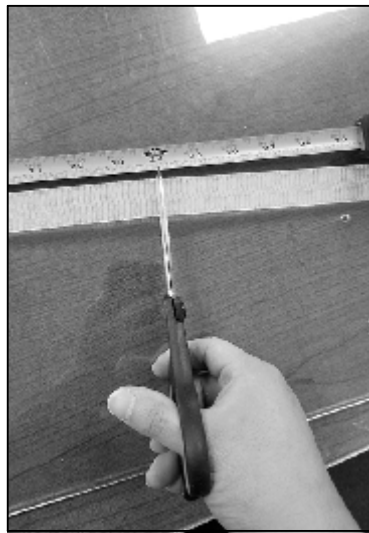
H-Connector (1 pc)

STEP 1: Peel off the protective plastic film from both sides of Main Panel Upright.

STEP 2: Depending on the item # ordered you will need to cut down the Dual Lock tape strips to different lengths. You will end up with eight pcs. See Below.

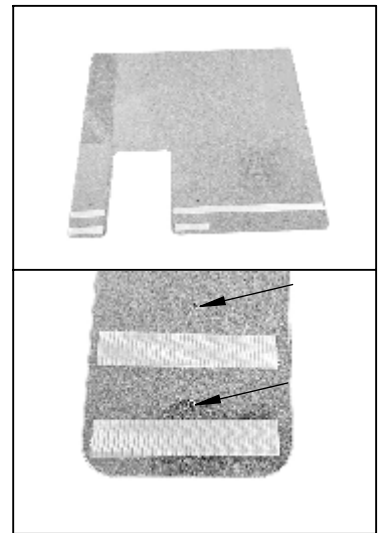
12861: 35.50" x 40.50" Shield
Dual Lock Length (2x)39.75"
Cut down to (2x)24", and (6x)5.25" lengths.

12865: 35.50" x 35.50" Shield
Dual Lock Length (2x)34.75"
Cut down to (2x)19", and (6x)5.25" lengths.



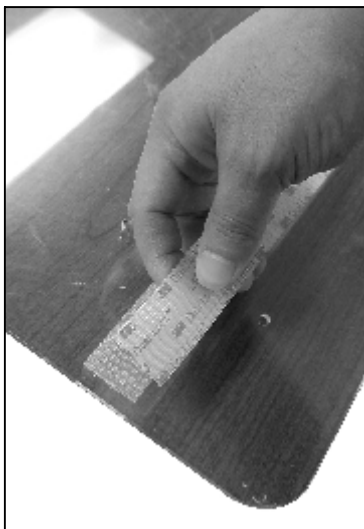
STEP 3: Remove 3M protective film mask from one long Dual Lock tape strip + 3 pcs of 5.25" Dual Lock tape strips and apply the adhesive side to one side of the Main Panel Upright as shown in the image on the right.

Top tape line will be centered between the two hole lines. Second tape line will be underneath between the bottom hole line and bottom edge.

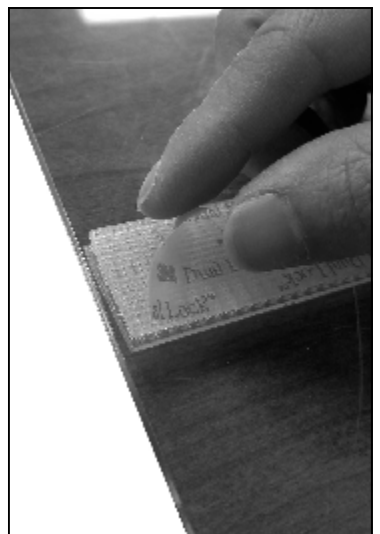


STEP 4: Attach four Dual Lock tape strips to the four Dual Lock tape strips on the Main Panel Upright.

Do not remove 3M protective film yet.



STEP 5: Remove the 3M protective film mask when the four remaining Dual Lock tape strips are attached to the four Dual Lock tape strips on the Main Panel Upright .



ASSEMBLY INSTRUCTIONS

READ ALL INSTRUCTIONS BEFORE YOU BEGIN. DO NOT JUMP AHEAD OF ANY STEP.

STEP 6: Place Main Panel Upright over the desired surface. Press firmly over the Main Panel Upright for 30 seconds to bond the adhesive side of the Dual Lock tape strips to the desired surface.

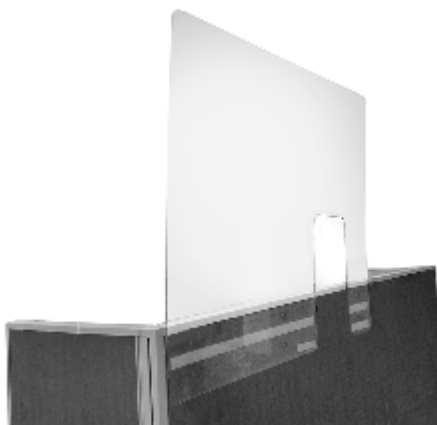


STEP 7: Assembly is now completed. You can remove and reattach as needed. Four Dual Lock strips will stay on the desired surface and the other four on the Main Panel Upright.

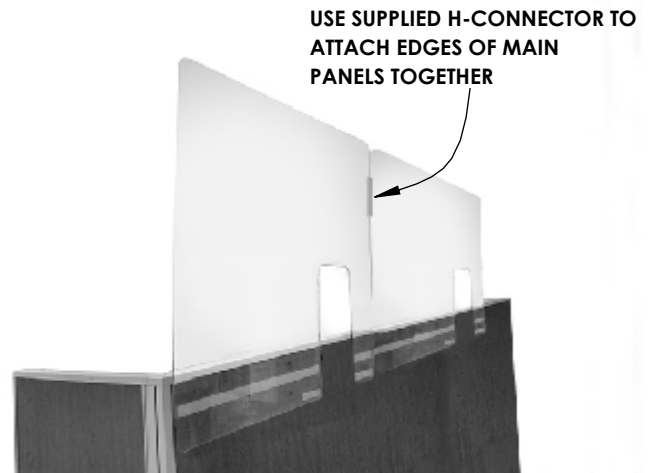


STEP 8: When reattaching make sure the Dual Lock tape strips are firmly attached to each other.

ASSEMBLY COMPLETED



SINGLE INSTALLATION



DUAL INSTALLATION

12861 & 12865