

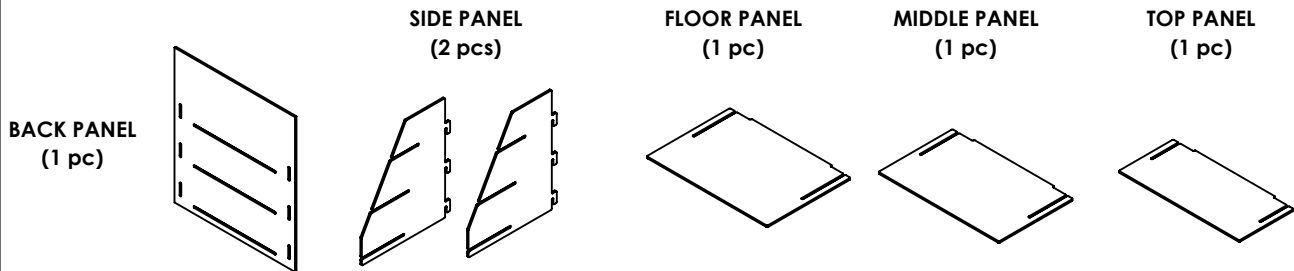
#18007 Wooden Medium 3 Tier Countertop Display

page 1 of 3

ASSEMBLY INSTRUCTIONS

READ ALL INSTRUCTIONS BEFORE YOU BEGIN. DO NOT JUMP AHEAD OF ANY STEP.

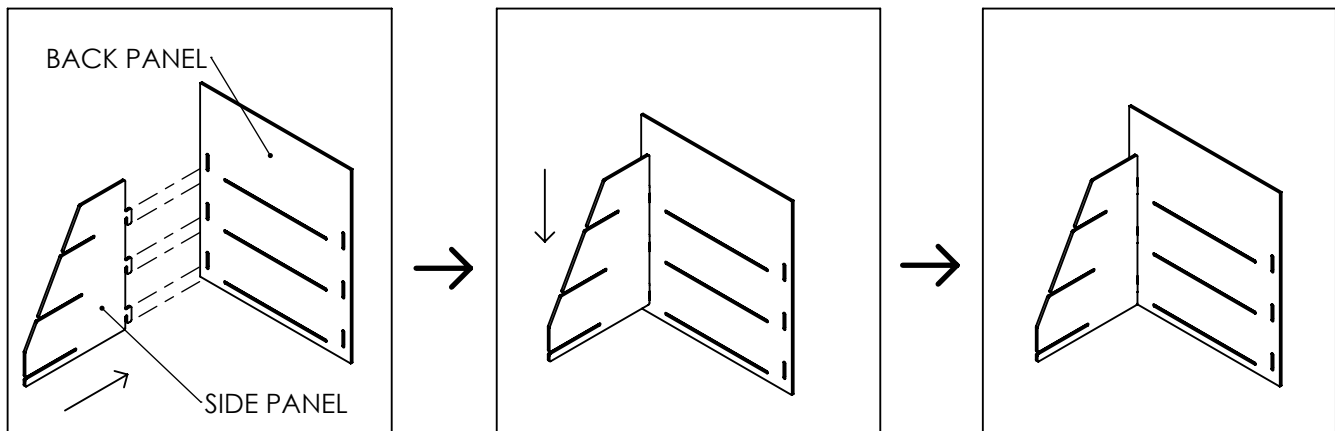
PARTS LIST:



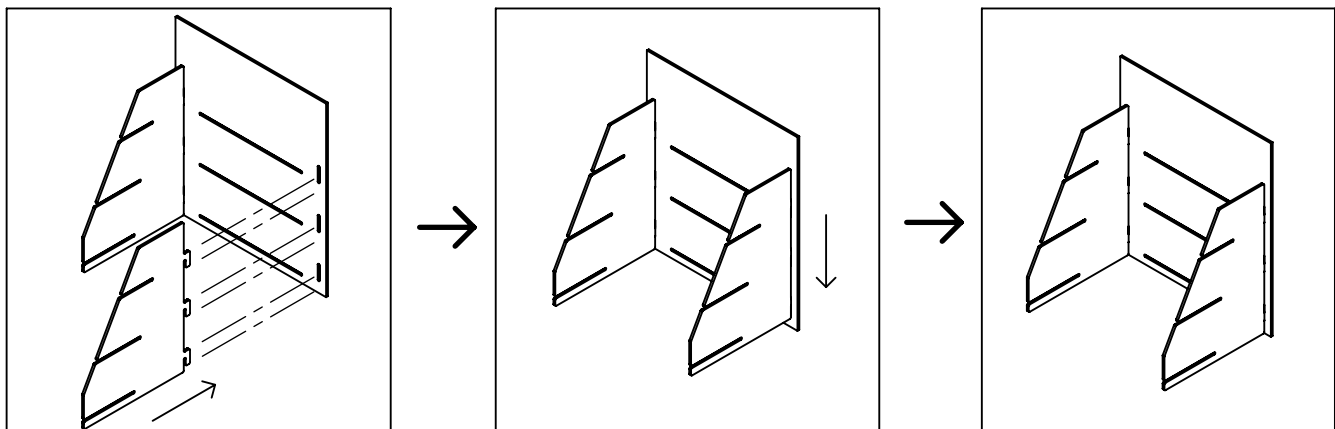
***Recommended: 1 Person Assembly**

****No Tools Required**

STEP 1: On an even flat surface stand the Back Panel upright, as shown below. While holding the Back Panel upright, simultaneously slide the hooks on one of the Side Panels into the corresponding slots on the Back Panel. Slide the side panel down until the hooks fully engage the slots on the Back Panel.



STEP 2: Repeat STEP 1 for other Side Panel.



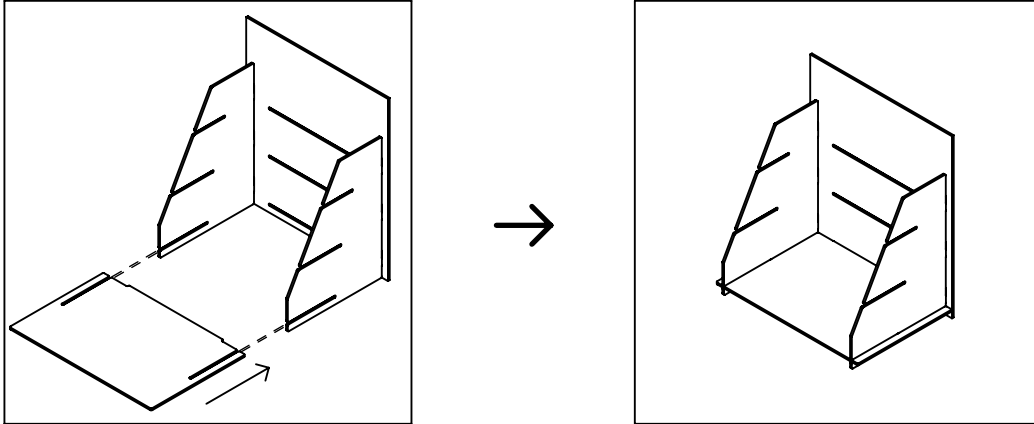
#18007 Wooden Medium 3 Tier Countertop Display

page 2 of 3

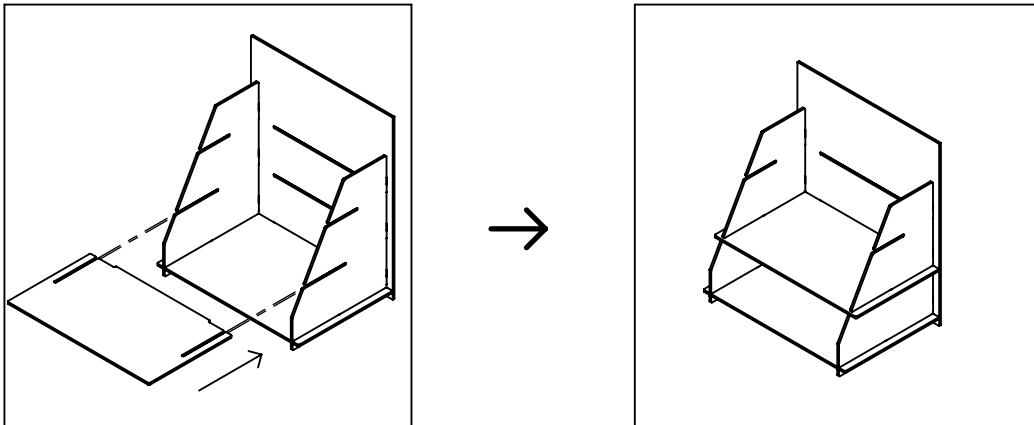
ASSEMBLY INSTRUCTIONS

READ ALL INSTRUCTIONS BEFORE YOU BEGIN. DO NOT JUMP AHEAD OF ANY STEP.

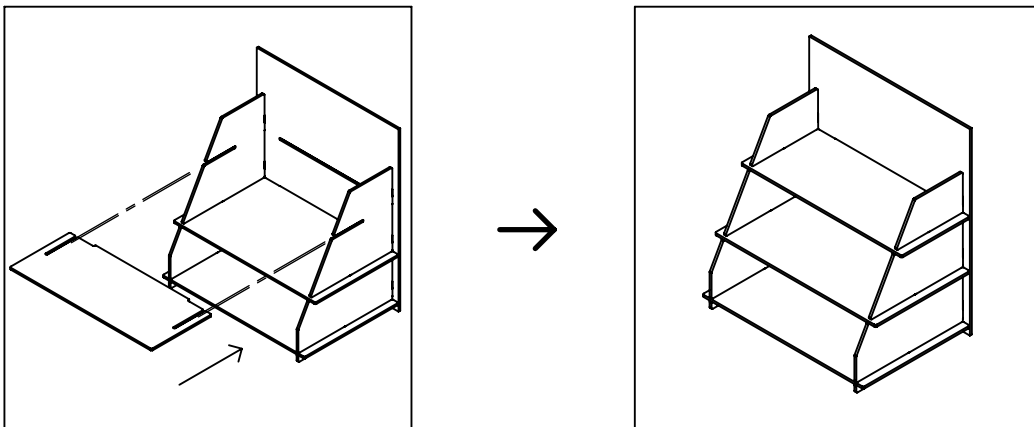
STEP 3: Insert the Floor Panel into the bottom slot of each Side Panel, as shown below. Ensure tab on rear of panel is inserted into slot on Back Panel.



STEP 4: Insert the Middle Panel into the middle slot of each Side Panel, as shown below. Ensure tab on rear of panel is inserted into slot on Back Panel.



STEP 5: Insert the Top Panel into the top slot of each Side Panel, as shown below. Ensure tab on rear of panel is inserted into slot on Back Panel.



ASSEMBLY INSTRUCTIONS

READ ALL INSTRUCTIONS BEFORE YOU BEGIN. DO NOT JUMP AHEAD OF ANY STEP.

ASSEMBLY COMPLETED

